

**SUBDIVISION PLAN OF LOT 4 AND LOT 5
SECTION 28 TOWNSHIP 23 ODYD PLAN EPP120134**

BCCS 82E.093



THE INTERSPACED PLOT SIZE OF THIS PLAN IS 660mm IN WIDTH BY 432mm IN HEIGHT (C SIZE) WHEN PLOTTED AT A SCALE OF 1:2000

PLAN EPP129792

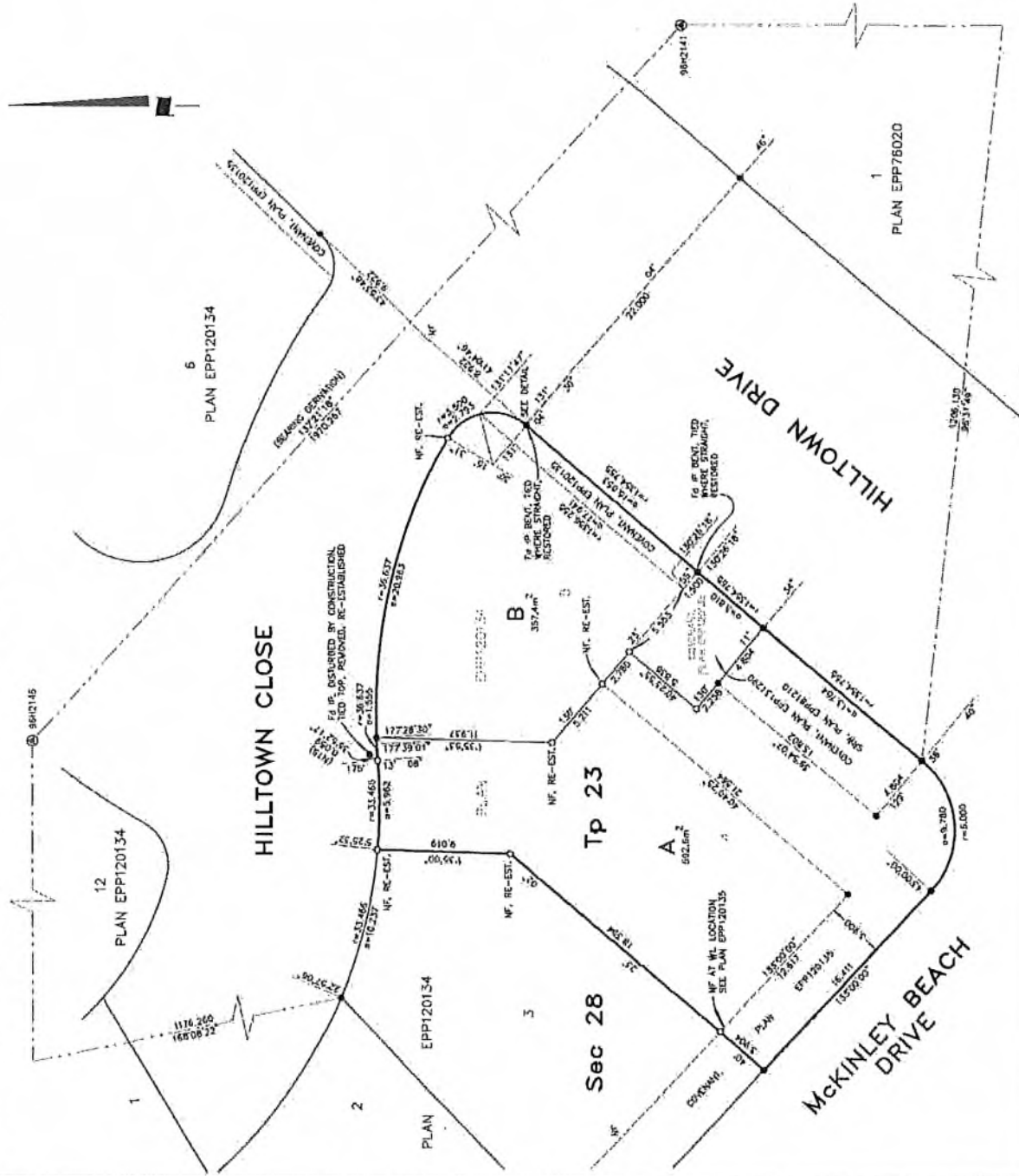


TABLE OF GEODETIC CONTROL MONUMENTS

MARK (C/S)	X, Y COORDINATES	UTM ZONE	ESTIMATED ABSOLUTE
96Q141	5029949.180	27E306.474	0.01
96Q145	5541176.467	32+029.221	0.01

LEGEND

INTEGRATED SURVEY AREA NO. 4, CITY OF KELLOWNA, MDOB5 (CSRS) 4033.BC1

GRID BEARINGS ARE DERIVED FROM OBSERVATIONS BETWEEN GEODETIC CONTROL MONUMENTS WHICH ARE REFERRED TO THE CENTRAL MERIDIAN OF UTM ZONE 11.

THE UTM COORDINATES AND ESTIMATED ABSOLUTE ACCURACY ARE DERIVED FROM MASCOT PUBLISHED COORDINATES AND STANDARD DEVIATIONS FOR GEODETIC CONTROL MONUMENTS 96Q141 AND 96Q145.

THIS PLAN SHOWS HORIZONTAL CIRCUMFERENCES, DISTANCES UNLESS OTHERWISE SPECIFIED, TO COMPUTE BY THE AVERAGE CIRCUMFERENTIAL METHOD WHICH HAS BEEN DERIVED FROM GEODETIC CONTROL MONUMENTS 96Q141 AND 96Q145.

- DENOTES CONTROL MONUMENT FOUND
- DENOTES STANDARD IRON POST FOUND
- NTS DENOTES NOT TO SCALE
- RE-EST. DENOTES RE-ESTABLISHED

THIS PLAN LIES WITHIN THE REGIONAL DISTRICT OF CENTRAL OKANAGAN.

THIS PLAN LIES WITHIN THE JURISDICTION OF THE APPROVING OFFICER FOR THE CITY OF KELLOWNA.

THE FIELD SURVEY REPRESENTED BY THIS PLAN WAS COMPLETED ON THE 21ST DAY OF JULY, 2023 CAMERON HENRY, BCLS 857

Ferguson Land Surveying & Geomatics Ltd.
 B.C. MAP CAMAK LAND SURVEYORS
 1000 WEST 10TH AVENUE, KELLOWNA, B.C.
 TELEPHONE: (250) 763-3115 FAX: (250) 763-0321

JOB No 23197-SUB-REV1

5/10/2024 (Rev. 15, 2023) www.fergusonlandsurveying.com
 19/09/2024

REFERENCE PLAN OF PART OF LOT B
SECTION 28 TOWNSHIP 23 ODYD PLAN EPP129792
FOR RELEASE PURPOSES PURSUANT TO SECTION 99(1)(e) OF THE LAND TITLE ACT
BCGS 82E.093

PLAN EPP131290



THE INTENDED PLOT SIZE OF THIS PLAN IS 560mm IN WIDTH BY 432mm IN HEIGHT (C SIZE) WHEN PLOTTED AT A SCALE OF 1:200

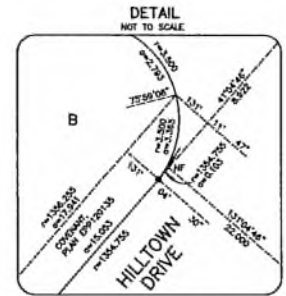
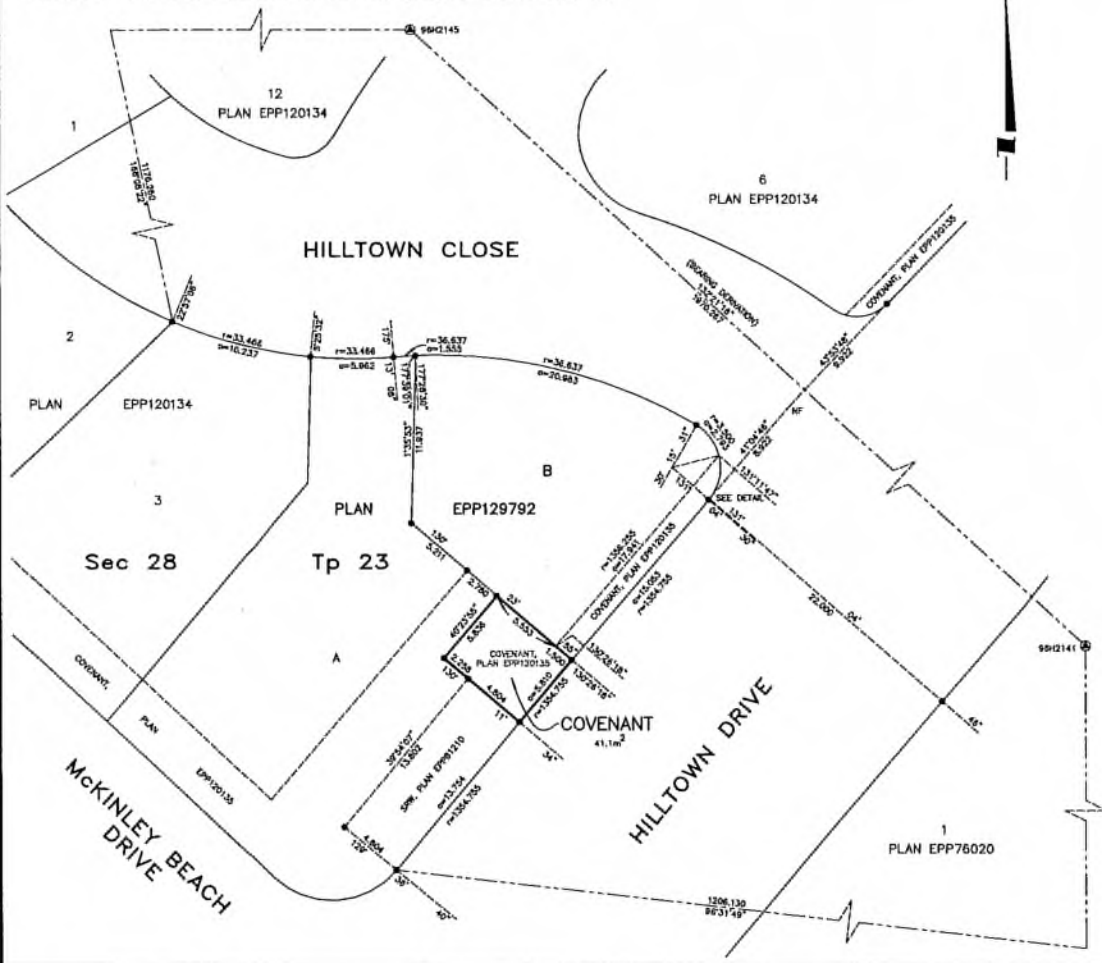


TABLE OF GEODETIC CONTROL MONUMENTS

NA83(CSRS)	4.0.D.B.C.1	UTM	ZONE 11	COORDINATES
OCM	NORTHING	EASTING		ESTIMATED ABSOLUTE ACCURACY
96H2141	5238848.180	326385.474		0.01
96H2145	5541176.467	324929.621		0.01

LEGEND

INTEGRATED SURVEY AREA NO. 4, CITY OF KELLOWIA, NA83 (CSRS) 4.0.D.B.C.1
GRID BEARINGS ARE DERIVED FROM OBSERVATIONS BETWEEN GEODETIC CONTROL MONUMENTS 96H2141 AND 96H2145 AND ARE REFERRED TO THE CENTRAL MERIDIAN OF UTM ZONE 11.
THE UTM COORDINATES AND ESTIMATED ABSOLUTE ACCURACY ACHIEVED ARE DERIVED FROM MASCOT PUBLISHED COORDINATES AND STANDARD DEVIATIONS FOR GEODETIC CONTROL MONUMENTS 96H2141 AND 96H2145.
THIS PLAN SHOWS HORIZONTAL GROUND-LEVEL DISTANCES UNLESS OTHERWISE SPECIFIED. TO COMPUTE GRID DISTANCES, MULTIPLY GROUND-LEVEL DISTANCES BY THE AVERAGE COMBINED FACTOR OF 0.9999044 WHICH HAS BEEN DERIVED FROM GEODETIC CONTROL MONUMENTS 96H2141 AND 96H2145.
⊙ DENOTES CONTROL MONUMENT FOUND
● DENOTES STANDARD IRON POST FOUND
THIS PLAN LIES WITHIN THE REGIONAL DISTRICT OF CENTRAL OKANAGAN.
THE FIELD SURVEY REPRESENTED BY THIS PLAN WAS COMPLETED ON THE 21st DAY OF JULY, 2003
CAMERON HENRY, BCLS B57

Ferguson Land Surveying & Geomatics Ltd.
B.C. AND CANADA LAND SURVEYORS
404-1630 PANDOSY STREET, KELLOWIA, B.C.
TELEPHONE (250) 763-3118 FAX (250) 763-0321

JOB No 23197-COV-REV1
B:\Survey\03\2003\Job_23197\23197-COV-REV1-03.DWG
2003 09 01 PLW/SGE/PLW